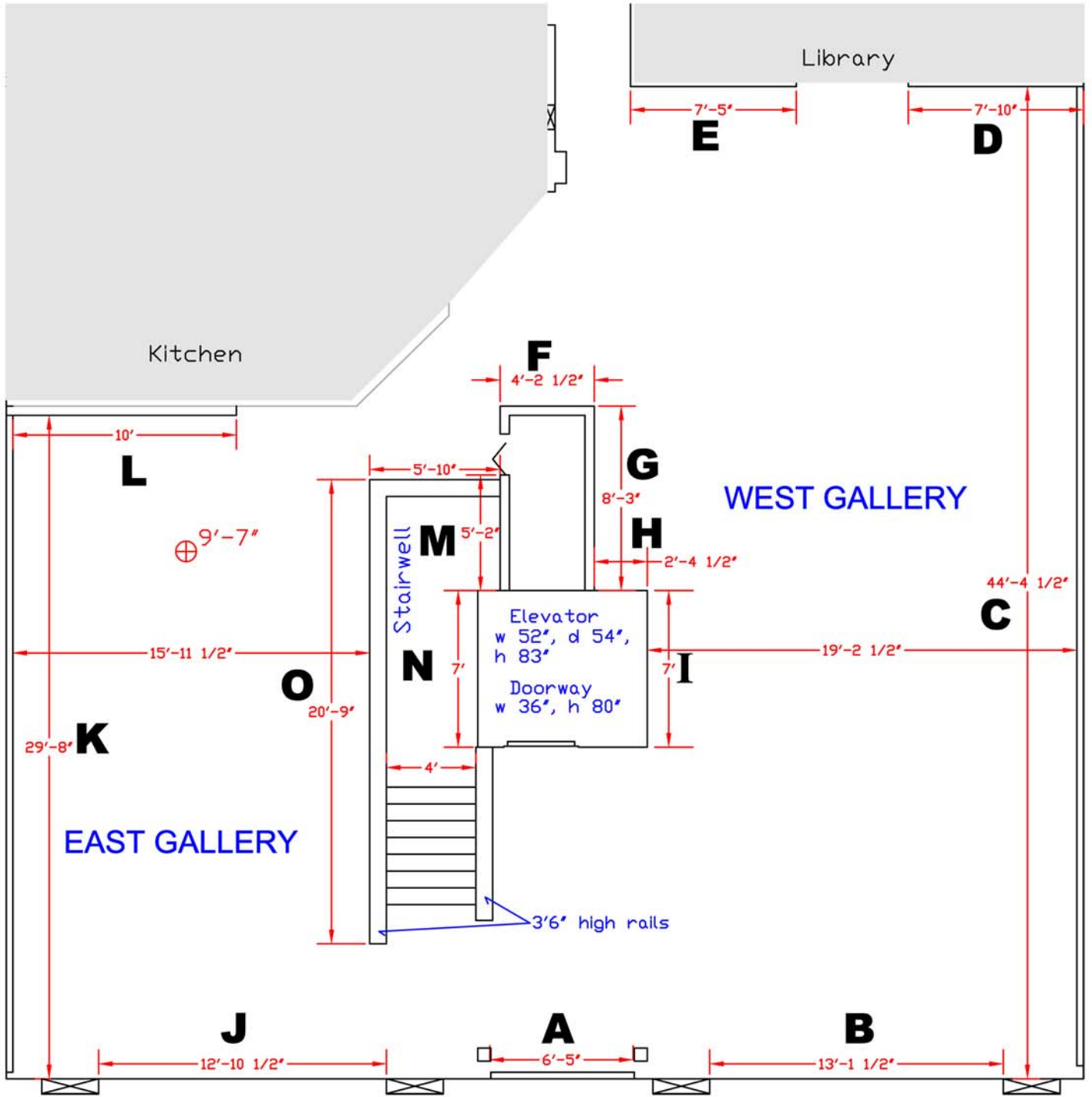


Grants Pass Museum of Art Exhibition space



GRANTS PASS MUSEUM OF ART  
 229 S.W. "G" Street, Grants Pass, OR 97526  
 (541) 479-3290 www.gpmuseum.com  
 Tuesday through Saturday, 10 am to 5 pm

Wall Area	Wall Code	Wall Description	Width	Mount Height	Mount Type	Notes
<b>Entry</b>						
A		North wall, top of stairs, opposite elevator door	6' 5"	8'	Particle board backed sheetrock	1, 5
<b>West Gallery</b>						
B		Brick wall between windows	13' 1.5"	9' 7"	Gallery rail	2
C		Long west wall	44' 4.5"	8'	Particle board backed sheetrock	5
D		South end at right of library door	7' 10"	9' 7"	Sheetrock	
E		South end at left of library door	7' 5"	9' 7"	Sheetrock	
F		Wall between two galleries, near kitchen	4' 2.5"	8' 13"	Sheetrock	
G		East wall setback	8' 3"	9' 7"	Sheetrock	
H		Return between G and I	2' 4.5"	9' 7"	Sheetrock	
I		East wall adjacent to elevator	7'	9' 7"	Sheetrock	
<b>East Gallery</b>						
J		Brick wall between windows	12' 10.5"	9' 7"	Gallery rail	2
K		Long east wall	29' 8"	8'	Particle board backed sheetrock	5
L		Wall at south end adjacent to kitchen	10'	8'	Particle board backed sheetrock	5
M		Wall above stairwell	5' 2"	9' 7"	Gallery rail	2
N		Longer wall above stairwell	7'	9' 7"	Gallery rail	2
<b>Stairwell Rail</b>						
O		Low wall above stairwell	20' 9"	3' 6"	Free-standing / Pedestal	

Notes

- 1 Section A is typically used for signage about the exhibit, but it may be changed depending upon the individual one.
- 2 The gallery rail is mounted to the ceiling from which cables are used to hang artwork
- 3 Free-standing works can be displayed in other areas of both galleries as well. However, the floor area of some of the west gallery must be kept clear for setting up chairs for Museum events.
- 4 The height of the ceiling is 9' 7" throughout the galleries.
- 5 The 8' mount height wall space accommodates mounting in front of brick walls using traditional wall hooks.